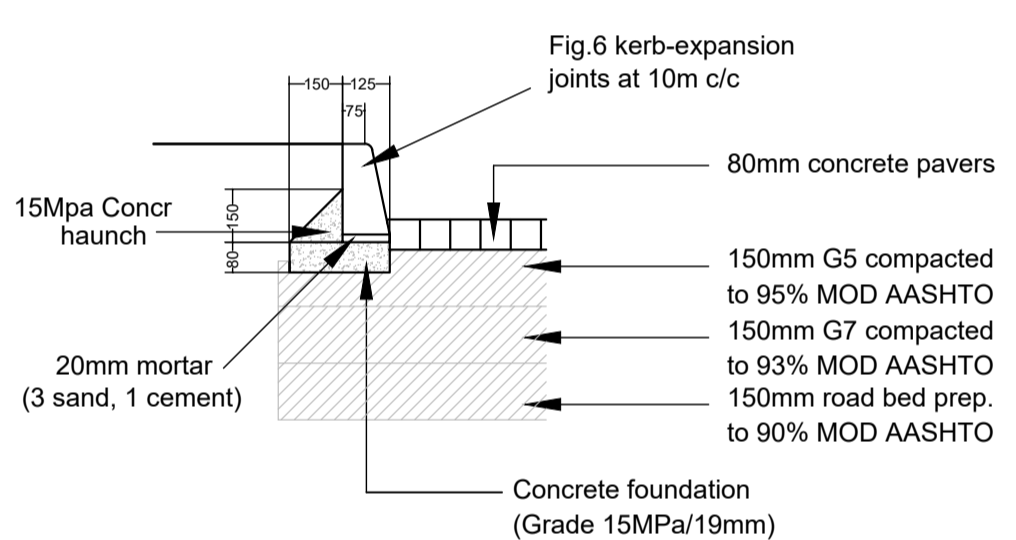
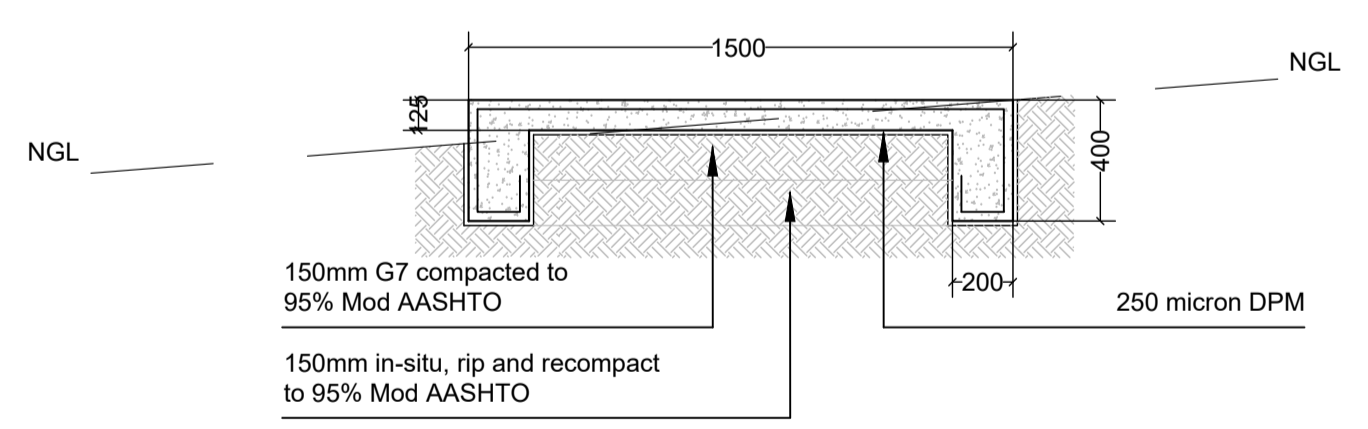


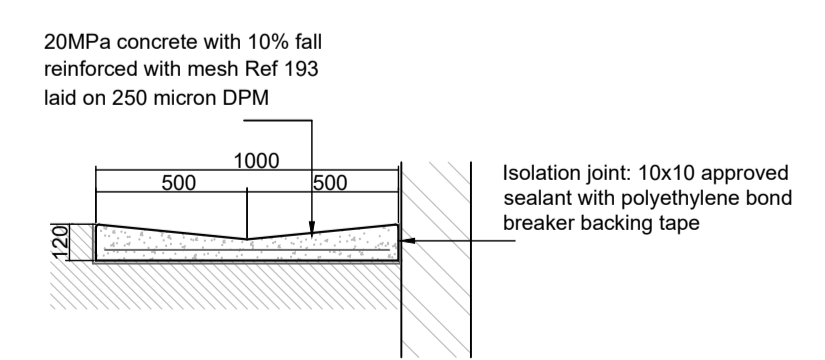
80mm Paved area: 620 sqm
60mm Paved area: 510 sqm
Figure 6: 160m
Figure 10 kerbs: 40m
Walkways: 430m long
Retaining wall: 95m long



Section a-a
scale 1:20



Sloped Surface (Typ.)
Section c-c
scale 1:25



Concrete "v" Drain
scale 1:20

HARD SURFACES AND STORMWATER LAYOUT PLAN scale 1:250

REVISIONS		
	DATE	DESCRIPTION
A	19/08/2022	STAGE 4 APPROVAL

CLIENT:

 **education**
Department:
Education
PROVINCE OF KWAZULU-NATAL

Head Office: 247 Burger Street, Pietermaritzburg, 3200
Telephone Number: +27 11 313 3911
Fax number: (033) 392 1203
Fax number: (033) 392 1203

IMPLEMENTING AGENT:

 **DBSA**
Headway Hill, 1258 Lever Road, Midrand, South Africa
Fax number: +27 11 313 3500 or +27 11 313 3297
Web: webmaster@dbsa.org

PROJECT MANAGERS:
CIVIL ENGINEERS:
STRUCTURAL ENGINEERS:

 **Bhadama**
Properties & Projects

Regus Westway, 3 Floor, 18 The Boulevard
Westway Office Park, Westville, DURBAN
Tel: (031) 003 3137, Fax: (031) 003 3101, F2E: 086 671 3682
sbu@bhadama.co.za, sphenw@bhadama.co.za

PROJECT NAME & CLIENT INFORMATION
STORM DAMAGE PROGRAMME:
ESIKHALENI PRIMARY SCHOOL

DBSA

SECTION / BLOCK

SITE LAYOUT PLAN

TITLE
CIVIL ENGINEERING DRAWING

DRAWING DESCRIPTION
HARD SURFACES AND
STORMWATER LAYOUT PLAN AND
DETAILS

SCALE	AS SHOWN			
DESIGNED SAM	DATE AUG 2022	PEng No. 20160552	SIGN:	
DRAWN SAM	DATE AUG 2022	PEng No. 20160552	SIGN:	
APPROVED RJK	DATE AUG 2022	DRAWN: 20060009	SIGN:	
DRAWING NUMBER: P2205/90-01				REVISION A